

LED Light Source System

AVL-DL1C

Digital Color Viewer



Product Features

- White HRa LED & RGB LED Light Support
- View Area : 600*420mm
- Light Control Function
- Touch Light Brightness Display
- Color Temp. : under2300k ~ 18000k , R.G.B
- Brightness : Over 20,000Lux(Surface) or Customizing
- Uniformity : Over 85%
- Automatic Temperature Controller
- RS232C & USB PC Interface
- Light Controller Software (For RS232C)
- AC100~250V Input. 50/60Hz
- Dimension : 700*600*540 (WHD, mm)

SPECIFICATION

MODEL	AVL-DL1C
View Area	600*420 mm
Brightness	Over20,000Lux(Surface)
Color Temperature	under2300k~18000k
Uniformity	Over 85%
Fan Control	Automatic or User setting
PC Interface	RS232C & USB
Display	Touch Light Brightness Display
Power supply	AC100~250V Input. 50/60Hz
Operating Temperature	-10°C ~ +50°C
Dimension	700*600*540 (WHD, mm)

LED Light Source System

AVL-DL1C

Digital Color Viewer



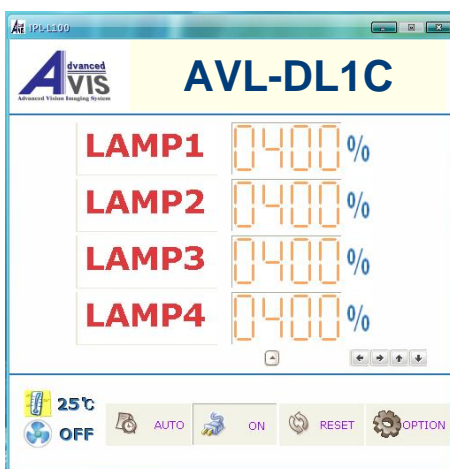
• Introduction

- ◇ High brightness white LED and RGB LED offer the standard illuminant of image of camera inspection.
- ◇ With the standard illuminant which provides an fixing color temperature differently, it will be able to express a many kinds color temperature and color coordinates.
- ◇ It will be able to save the each 32 item of user B mode, so it can be choose the each item which wanted.
- ◇ Test the shading without the chart due to high uniformity of the standard illuminant.
- ◇ With the touch display to setup and control system function.
- ◇ No flicker because of using a digital constant current control method.

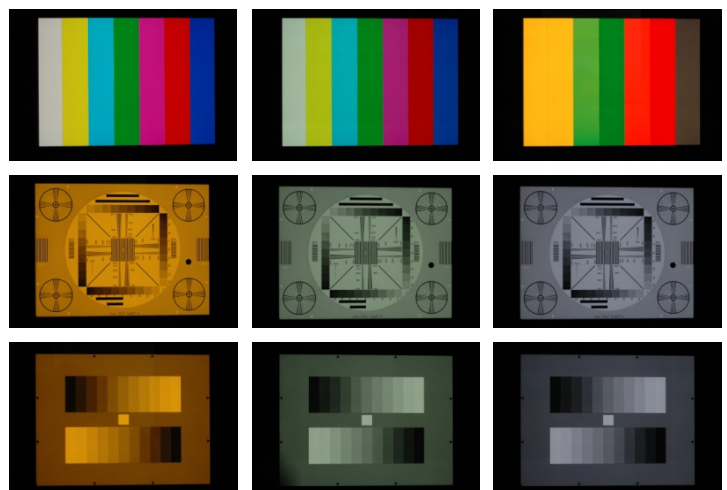
• Use field of product

CCTV Analog Camera / USB PC Camera / Mobile Camera / Web Camera / Digital Camera / IP Camera.

• PC Control program



• Color temperature image



- It can be changed the specification without any notice for the quality improvement.

Yojet Co., Ltd.

Rm. 3G19, No.5, Sec.5, Xinyi Rd., Xinyi Dist, Taipei City 110, Taiwan (R.O.C)

Tel : 886-2-2729-2660 Fax : 886-2-2729-2552

Website: <http://www.yojet.com.tw> E-mail: thomas@yojet.com.tw

